

nova™

PRO-TEK PREMIUM UPGRADES

POWERFUL JAWS

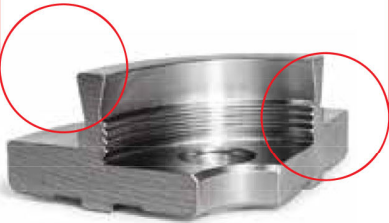
Stronger, more versatile 2"/50mm PRO-TEK Jaws keep the project secure and firmly held in place.

INTUITIVE CLOCKWISE SCROLL

For easy operation.

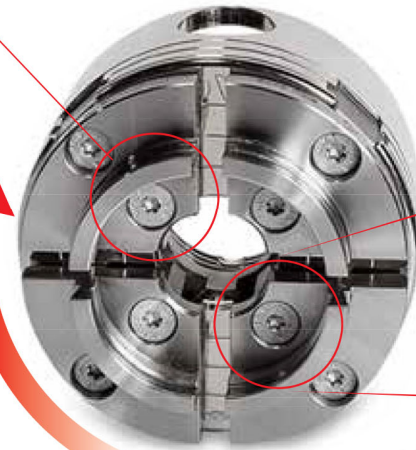
IMPROVED DOVETAIL & SERRATED PROFILE

Provides maximum control by pulling the project into the chuck and holding round and square blanks firmly.



UPGRADED 6-POINT STAR FASTENERS

Exert more torque with ease, providing better holding power and minimizing strip out.



COPPER INFUSED JAW SLIDES

For effortless movement. Self lubricating and features Auto Stop feature.

PREMIUM RUST RESISTANT NICKEL FINISH

Ideal for turning green wood and low maintenance.



WOODWORM SCREW

SafeLock allows fast and secure mounting of rough material.



PRECISION LASER ETCHED JAWS

Numbering allows easy jaw and slide alignment, positioning and change out.



FULLY SEALED INDEXING BACKING PLATE

NEW! NOVA red fully sealed backing plate extends life and adds an additional safety measure for use in operation. Reinforced with stranded glass fibers for extreme durability that protects the internal gearing from moisture and debris creating low maintenance and ensuring a longer life. (PRO-TEK SUPERNOVA2 Only)



FREE! MICROFIBER SHOP TOWEL

Helps to keep your PRO-TEK chuck and jaws well maintained 11.5" x 10.5".



6-POINT T HANDLE

Upgraded 6 point star fasteners exerting more torque with ease, offering better holding power and minimizing strip out for longer life.

